

# Underfloor Trunking Raisedfloor Trunking Flushfloor Trunking



LIFTING HANDLE

PERFORMANCE CABLE

PLUG GROMMET

HINGE COVER

LEVELING SCREW

BASE FRAME  
(One unit die-cast)

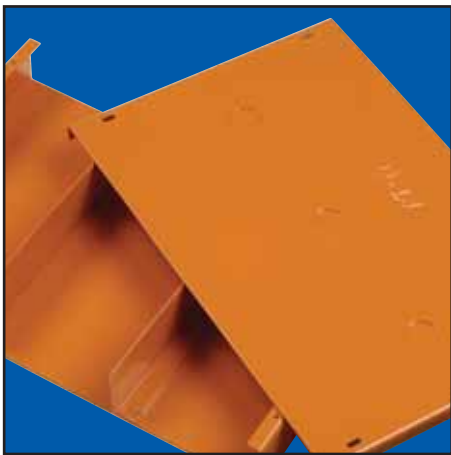
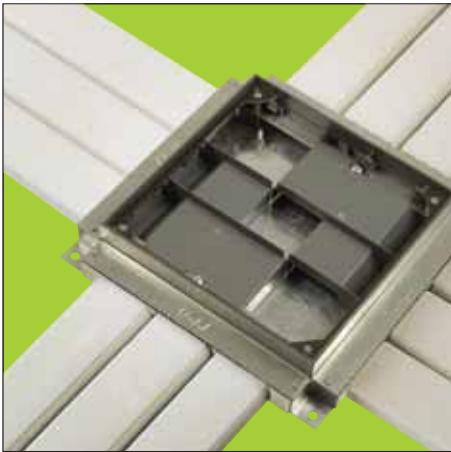
LEVELING SCREW

SIDE BLANK  
(Prepunched to order)

PULL



# Contents



contents

## Underfloor Trunking

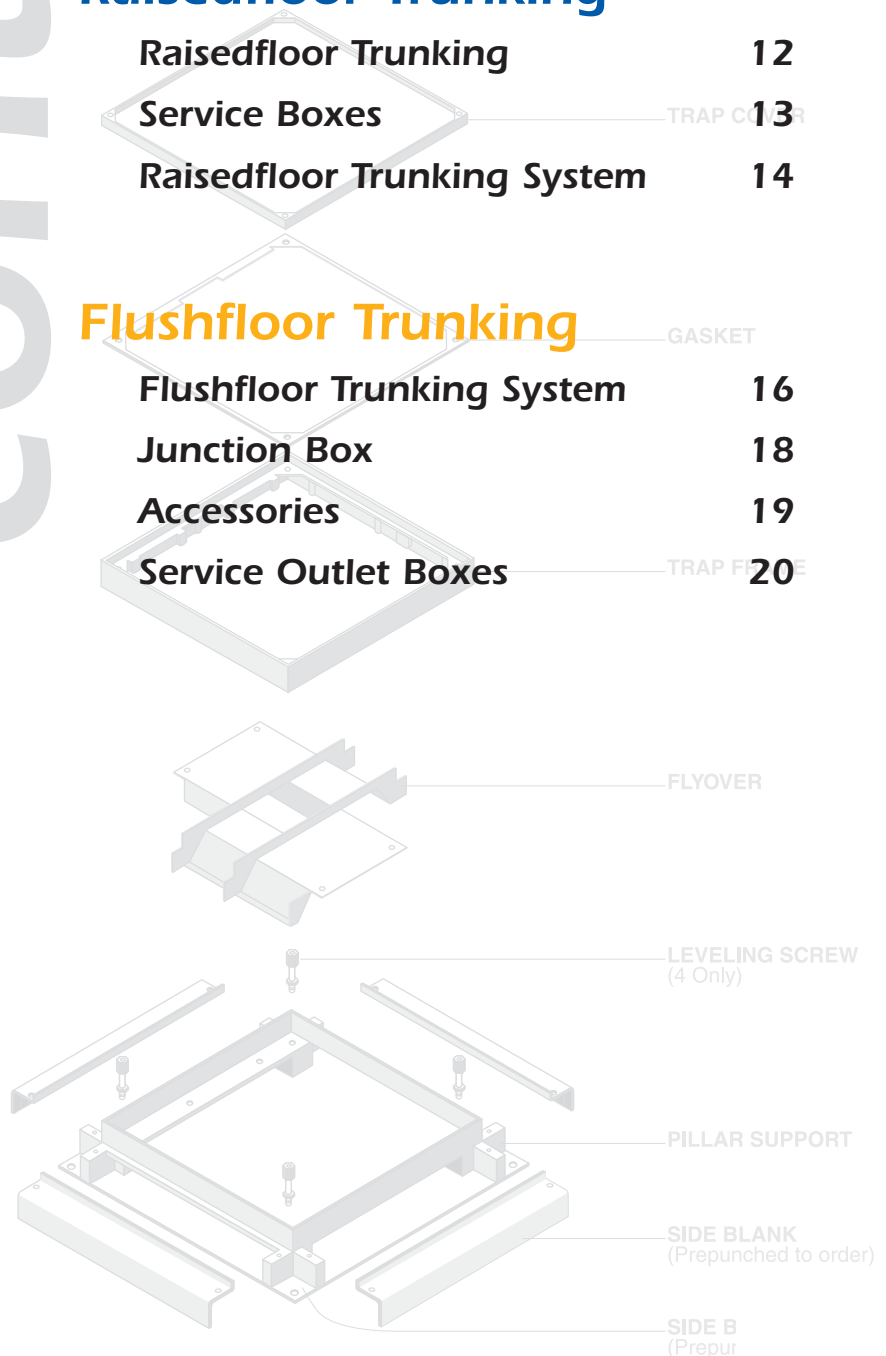
Ducting and Accessories	4
Metal Trunking	5
Junction Box	6
Junction Box Exploded View	7
Service Boxes	8
Underfloor Trunking System	10

## Raisedfloor Trunking

Raisedfloor Trunking	12
Service Boxes	13
Raisedfloor Trunking System	14

## Flushfloor Trunking

Flushfloor Trunking System	16
Junction Box	18
Accessories	19
Service Outlet Boxes	20





# Underfloor Trunking



## Ducting and Accessories

**Material:** Heavy gauge high impact uPVC

**Standard length:** 2.9 metres

**Hight:** 25mm



### uPVC Underfloor Trunking

Product Code	Description
UFD 225 W	25 H x 50 W x 2.5 T
UFD 325 W	25 H x 75 W x 2.5 T
UFD 332 W	25 H x 75 W x 3.2 T
UFD 427 W	25 H x 100 W x 2.7 T
UFD 432 W	25 H x 100 W x 3.2 T

## Vertical Access

The vertical access box helps to facilitate easy accessibility from floor ducts to wall ducts. This is for connections to distribution boards or other floors.



### Underfloor Vertical Access Box

#### 25mm Depth (L-Shape)

Product Code	Description
UL-LVB 250/2	25 to 50 H x 250 W 2 Compartments
UL-LVB 250/3	25 to 50 H x 250 W 3 Compartments
UL-LVB 300/2	25 to 50 H x 300 W 2 Compartments
UL-LVB 300/2	25 to 50 H x 300 W 3 Compartments

#### 32mm Depth (L-Shape)

Product Code	Description
UL-MVB 250/2	32 to 50 H x 250 W 2 Compartments
UL-MVB 250/3	32 to 50 H x 250 W 3 Compartments
UL-MVB 300/2	32 to 50 H x 300 W 2 Compartments
UL-MVB 300/2	32 to 50 H x 300 W 3 Compartments

#### 38mm Depth (L-Shape)

Product Code	Description
UL-HVB 250/2	38 to 50 H x 250 W 2 Compartments
UL-HVB 250/3	38 to 50 H x 250 W 3 Compartments
UL-HVB 300/2	38 to 50 H x 300 W 2 Compartments
UL-HVB 300/2	38 to 50 H x 300 W 3 Compartments



### Underfloor Vertical Access Box

#### 25mm Depth (Slanting)

Product Code	Description
UL-LVBs 250/2	25 to 50 H x 250 W 2 Compartments
UL-LVBs 250/3	25 to 50 H x 250 W 3 Compartments
UL-LVBs 300/2	25 to 50 H x 300 W 2 Compartments
UL-LVBs 300/2	25 to 50 H x 300 W 3 Compartments

#### 32mm Depth (Slanting)

Product Code	Description
UL-MVBs 250/2	32 to 50 H x 250 W 2 Compartments
UL-MVBs 250/3	32 to 50 H x 250 W 3 Compartments
UL-MVBs 300/2	32 to 50 H x 300 W 2 Compartments
UL-MVBs 300/2	32 to 50 H x 300 W 3 Compartments

#### 38mm Depth (Slanting)

Product Code	Description
UL-HVBs 250/2	38 to 50 H x 250 W 2 Compartments
UL-HVBs 250/3	38 to 50 H x 250 W 3 Compartments
UL-HVBs 300/2	38 to 50 H x 300 W 2 Compartments
UL-HVBs 300/2	38 to 50 H x 300 W 3 Compartments

# TRUNKING

## Metal Trunking

**Material:** Galvanised sheet steel to BS2989

**Standard thickness:** 1.6mm

**Standard lengths:** 2.44 metres or 3.0 metres single, two or triple compartments

**Standard depths:** 25mm, 32mm and 38mm

Cut to length can be arranged and is subject to price confirmation and availability



### UL-UFL

List No.	Description
UL-UFL 50/1/6	50 x 25 x 1.6mm 1 Compartment
UL-UFL 75/1/6	75 x 25 x 1.6mm 1 Compartment
UL-UFL 100/1/6	100 x 25 x 1.6mm 1 Compartment
UL-UFL 150/2/6	100 x 25 x 1.6mm 2 Compartments
UL-UFL 150/3/6	150 x 25 x 1.6mm 3 Compartments
UL-UFL 200/2/6	200 x 25 x 1.6mm 2 Compartments
UL-UFL 225/3/6	225 x 25 x 1.6mm 3 Compartments
UL-UFL 250/3/6	250 x 25 x 1.6mm 3 Compartments
UL-UFL 275/3/6	275 x 25 x 1.6mm 3 Compartments
UL-UFL 300/3/6	300 x 25 x 1.6mm 3 Compartments



### UL-UFM

List No.	Description
UL-UFM 50/1/6	50 x 32 x 1.6mm 1 Compartment
UL-UFM 75/1/6	75 x 32 x 1.6mm 1 Compartment
UL-UFM 100/1/6	100 x 32 x 1.6mm 1 Compartment
UL-UFM 150/2/6	100 x 32 x 1.6mm 2 Compartments
UL-UFM 150/3/6	150 x 32 x 1.6mm 3 Compartments
UL-UFM 200/2/6	200 x 32 x 1.6mm 2 Compartments
UL-UFM 225/3/6	225 x 32 x 1.6mm 3 Compartments
UL-UFM 250/3/6	250 x 32 x 1.6mm 3 Compartments
UL-UFM 275/3/6	275 x 32 x 1.6mm 3 Compartments
UL-UFM 300/3/6	300 x 32 x 1.6mm 3 Compartments



### UL-UFH

List No.	Description
UL-UFH 50/1/6	50 x 38 x 1.6mm 1 Compartment
UL-UFH 75/1/6	75 x 38 x 1.6mm 1 Compartment
UL-UFH 100/1/6	100 x 38 x 1.6mm 1 Compartment
UL-UFH 150/2/6	100 x 38 x 1.6mm 2 Compartments
UL-UFH 150/3/6	150 x 38 x 1.6mm 3 Compartments
UL-UFH 200/2/6	200 x 38 x 1.6mm 2 Compartments
UL-UFH 225/3/6	225 x 38 x 1.6mm 3 Compartments
UL-UFH 250/3/6	250 x 38 x 1.6mm 3 Compartments
UL-UFH 275/3/6	275 x 38 x 1.6mm 3 Compartments
UL-UFH 300/3/6	300 x 38 x 1.6mm 3 Compartments

Underfloor Trunking is designed to be positioned on a concrete slab and completely covered by the floor screed.

## Junction Box

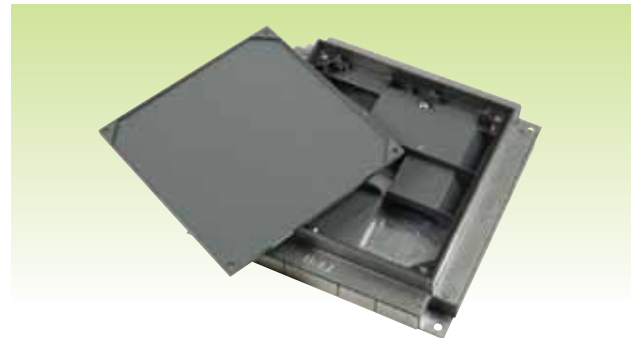
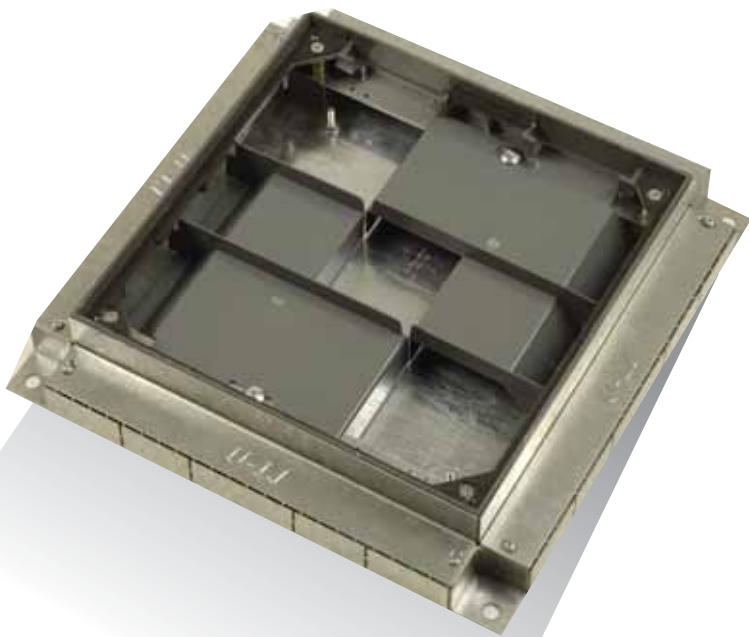
U-LI junction boxes are specially designed to facilitate cabling management in high rise buildings. U-LI junction boxes consists of three main features:

- **Box base frame**
- **Flyover bridge**
- **Trap and frame**

The box frame is made of high pressure die-cast zinc alloy, a non-ferrous and rust-proof material.

The flyover bridge can be fabricated from ABS plastic or eletro-galvanised steel with powder coating to give it a good finishing. The flyover bridge which is used to segregate all the service cables can be supplied in two or three compartments.

The trap and frame are made of high pressure die-cast zinc alloy and is powder coated to further enhance the rust resistance and good appearance. The trap and frame are secured by countersunk nickel plated screws recessed 6mm and 9mm to enable it to accept carpet or vinyl tile finishing.



### Junction Box For

#### Max. 25mm Depth Ductings

Product Code	Description
UL-UFJBL 250/2	250 x 250 x 56 - 72mm 2 Compartments
UL-UFJBL 250/3	250 x 250 x 56 - 72mm 3 Compartments
UL-UFJBL 300/2	300 x 300 x 56 - 72mm 2 Compartments
UL-UFJBL 300/3	300 x 300 x 56 - 72mm 3 Compartments
UL-UFJBL 325/3	325 x 325 x 56 - 72mm 3 Compartments

#### Max. 32mm Depth Ductings

Product Code	Description
UL-UJBM 250/2	250 x 250 x 75 - 90mm 2 Compartments
UL-UJBM 250/3	250 x 250 x 75 - 90mm 3 Compartments
UL-UJBM 300/2	300 x 300 x 75 - 90mm 2 Compartments
UL-UJBM 300/3	300 x 300 x 75 - 90mm 3 Compartments
UL-UJBM 325/3	325 x 325 x 75 - 90mm 3 Compartments

#### Max. 38mm Depth Ductings

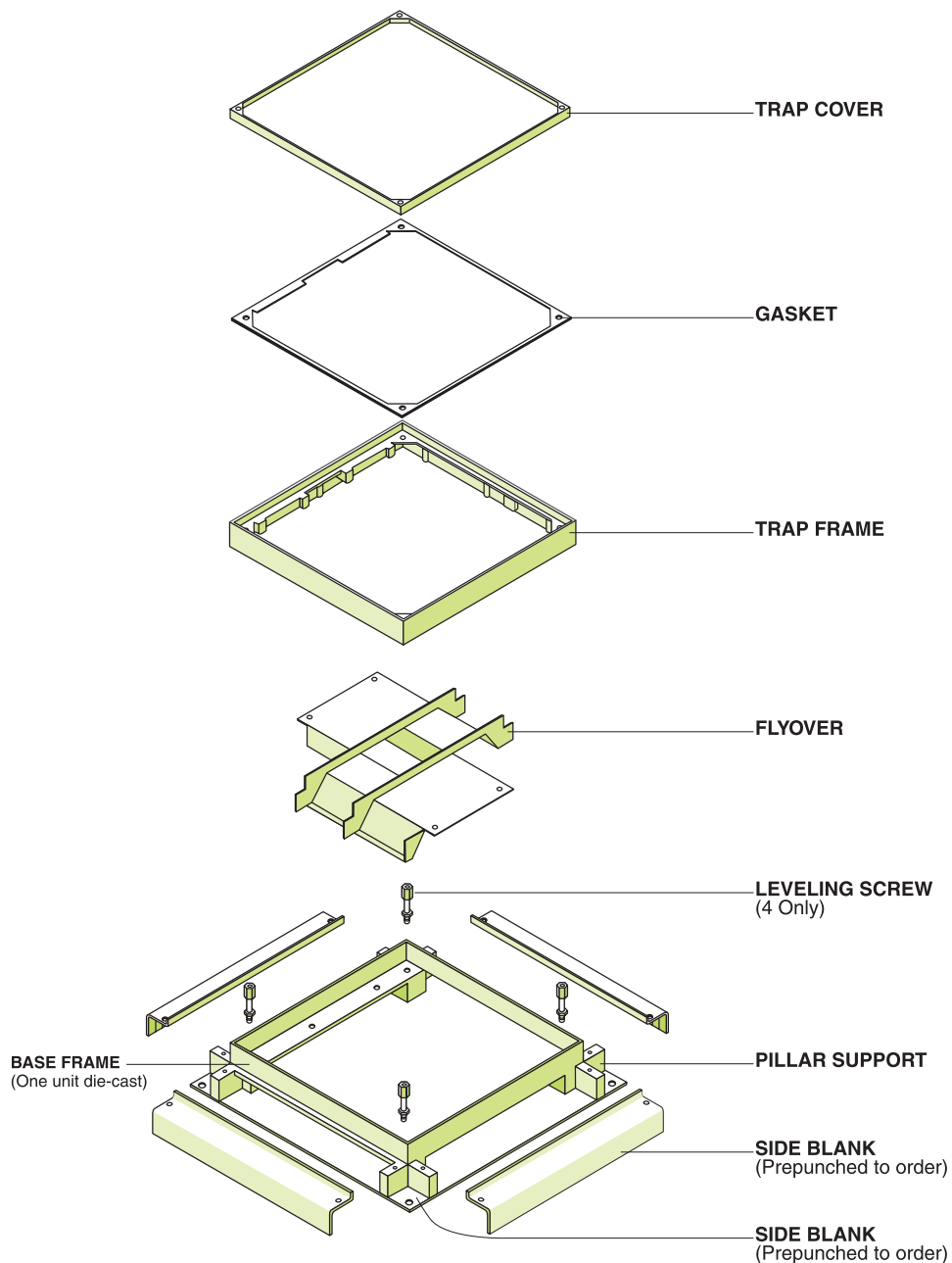
Product Code	Description
UL-UJBH 250/1	250 x 125 x 75 - 95mm 1 Compartment
UL-UJBH 250/2	250 x 250 x 75 - 95mm 2 Compartments
UL-UJBH 250/3	250 x 250 x 75 - 95mm 3 Compartments
UL-UJBH 300/2	300 x 300 x 75 - 95mm 2 Compartments
UL-UJBH 300/3	300 x 300 x 75 - 95mm 3 Compartments
UL-UJBH 325/3	325 x 325 x 75 - 95mm 3 Compartments

# TRUNKING

## Exploded View

- Adjustable upwards by 15mm
- Overall depth 56mm for 25mm trunking
- Overall depth 75mm for 38mm trunking
- Lid recess 6mm and 9mm for carpet or vinyl can be fitted

The Junction Box comes complete with 4 Conduit Knockout Plates and 4 Trunking Entry Plates. It can be used as a terminal, through, bend, tee, fourway or conduit box. Flyover is also supplied.





## Service Outlet Box

**Overall Depth:**

56mm for 25mm trunking  
75mm for 32mm/38mm trunking

**Standard Finish:**

Epoxy Powder Coated

The Service Box comes with 3 Conduit Knockout Plates and 3 Trunking Entry Plates. It can be used as a through terminal or conduit outlet module.

**Outlet Plates**

Must be ordered separately from Service Outlet Module.

**Leveling Screw**

Product Code	Description
UL-LS95	leveling adjustable from 110-130
UL-LS60	leveling adjustable from 75-100
UL-LS38	leveling adjustable from 56-75



**Service Outlet Box For**

**Max. 32mm Depth Ductings**

Product Code	Description
UL-UFSBM 250/2/1	250 x 250 x 75 - 95mm 2 Compartments 1 Trap
UL-UFSBM 250/3/1	250 x 250 x 75 - 95mm 3 Compartments 1 Trap
UL-UFSBM 300/2/1	300 x 300 x 75 - 95mm 2 Compartments 1 Trap
UL-UFSBM 300/3/1	300 x 300 x 75 - 95mm 3 Compartments 1 Trap
UL-UFSBM 325/3/1	325 x 325 x 75 - 95mm 3 Compartments 1 Trap



**Service Outlet Box For**

**Max. 25mm Depth Ductings**

Product Code	Description
UL-UFSBL 250/2/1	250 x 250 x 56 - 72mm 2 Compartments 1 Trap
UL-UFSBL 250/3/1	250 x 250 x 56 - 72mm 3 Compartments 1 Trap
UL-UFSBL 300/2/1	300 x 300 x 56 - 72mm 2 Compartments 1 Trap
UL-UFSBL 300/3/1	300 x 300 x 56 - 72mm 3 Compartments 1 Trap
UL-UFSBL 325/3/1	325 x 325 x 56 - 72mm 3 Compartments 1 Trap



**Service Outlet Box For**

**Max. 38mm Depth Ductings**

Product Code	Description
UL-USBH 250/2/1	250 x 250 x 75 - 90mm 2 Compartments 1 Trap
UL-USBH 250/3/1	250 x 250 x 75 - 90mm 3 Compartments 1 Trap
UL-USBH 300/2/1	300 x 300 x 75 - 90mm 2 Compartments 1 Trap
UL-USBH 300/3/1	300 x 300 x 75 - 90mm 3 Compartments 1 Trap
UL-USBH 325/3/1	325 x 325 x 75 - 90mm 3 Compartments 1 Trap

# TRUNKING

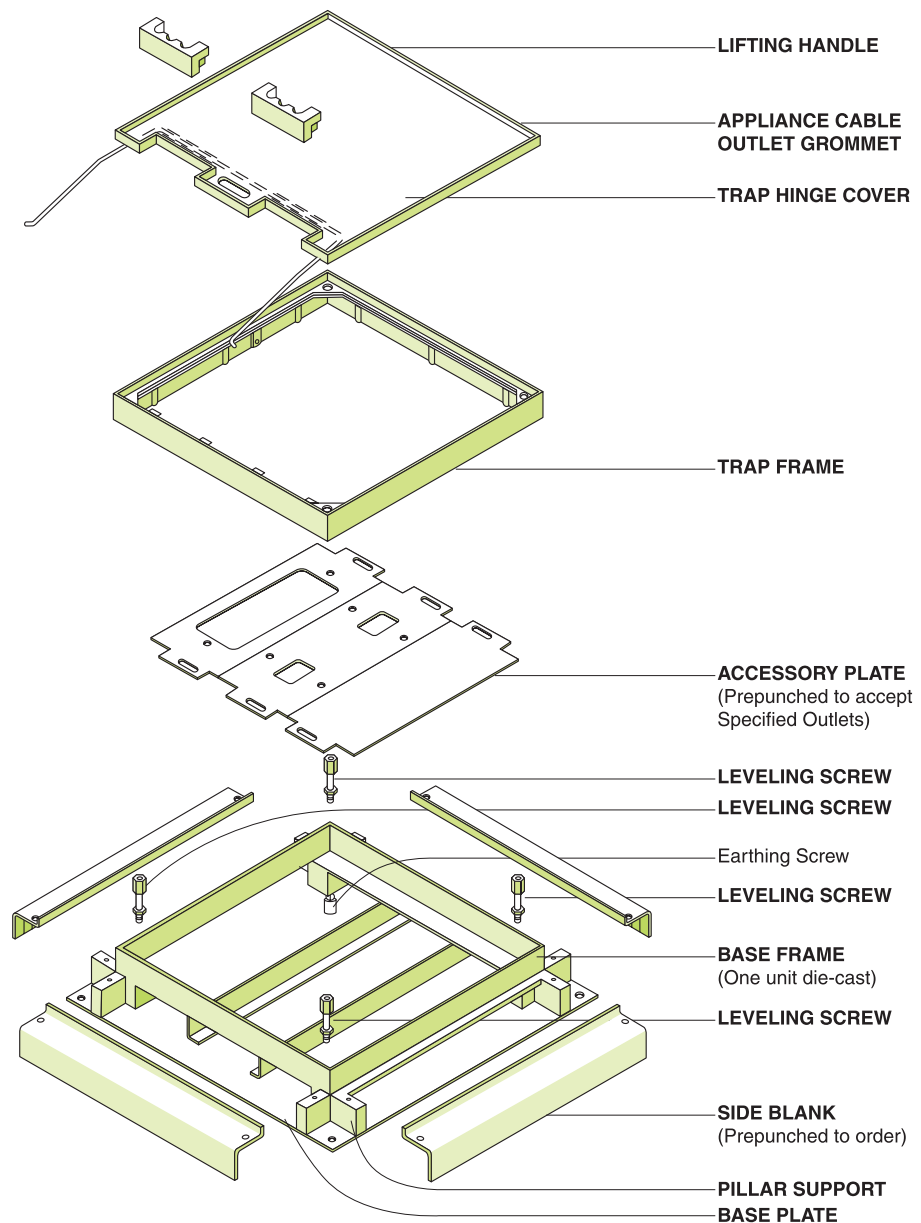
## Service Outlet Box

U-LI Service boxes are specially designed to segregate cables for power, telephone and computer circuits. The service box is provided with a service outlet plate to be mounted to the necessary outlet. The type and amount of sockets can be tailor made to the requirement of customers.

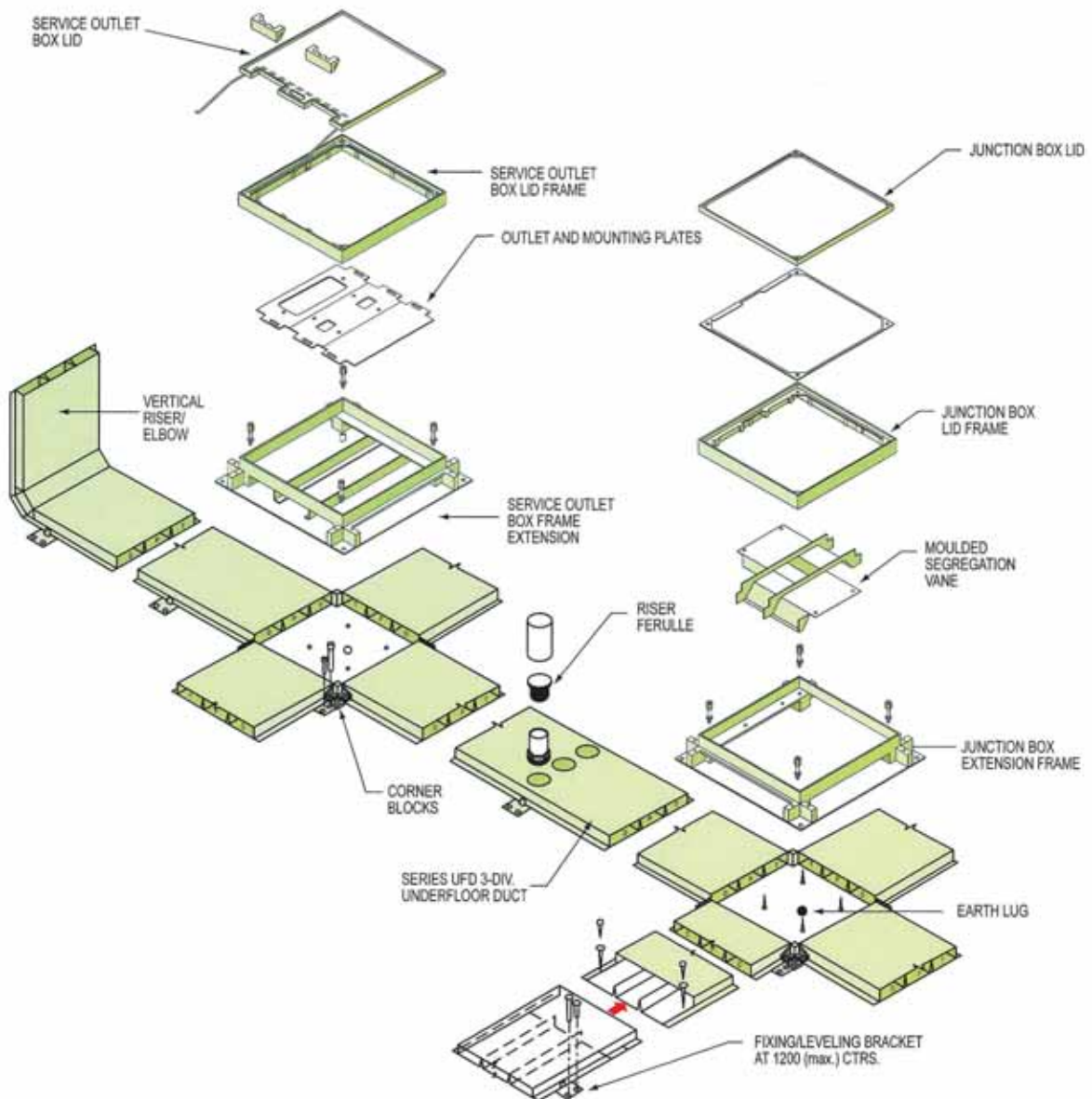
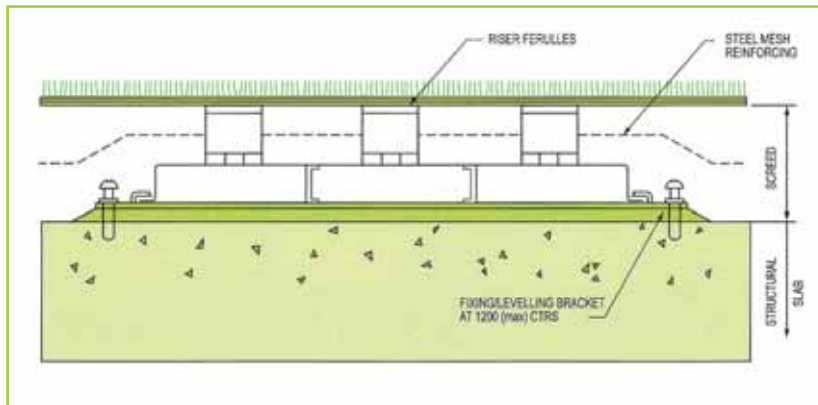
ULI Service boxes consist of three components:

- Box base frame
- Flyover bridge
- Trap and frame

The box base frame, trap and frame, and outlet panel are made of hot dipped galvanised steel sheets which conform to BS 2898. The trap, frame and outlet panel are powder coated to provide a good finish and protection to visible parts. The side plates of the box base are designed to be used for trunking and conduit entries, recessed 6mm and 9mm to enable it to accept carpet or vinyl tile floor finishing.



## Underfloor Trunking System



# Raisedfloor Trunking



## Raisedfloor Trunking

**Standard Length:**

2.44 / 3.0meter

**Standard Finish:**

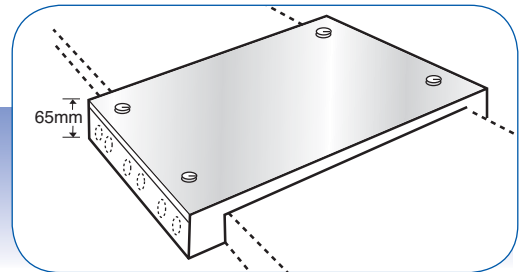
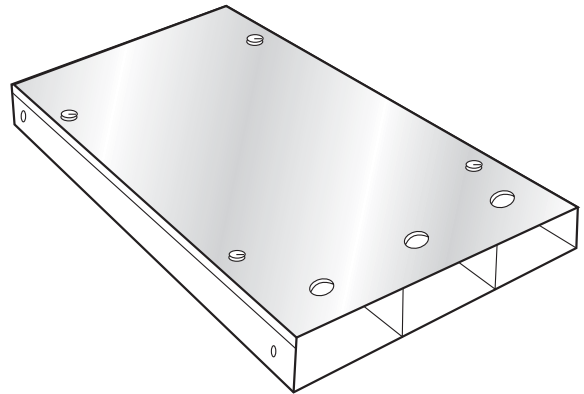
Manufactured from 1.6mm Galvanised Steel to BS2989

**Product Codes**

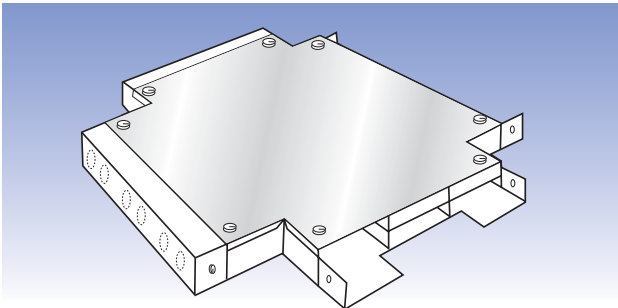
Size (mm)	2 Compartment	3 Compartment
200 x 40	RFT/840/2	RFT/840/3
300 x 40	-	RFT/1240/3
400 x 40	-	RFT/1640/3

Notes: Other dimensions and variations are available upon request.

The Tap Off Unit can be placed at any position along the Raisedfloor Trunking. It allows a 20mm and 25mm flexible conduit to be connected via knockouts whilst maintaining full segregation.

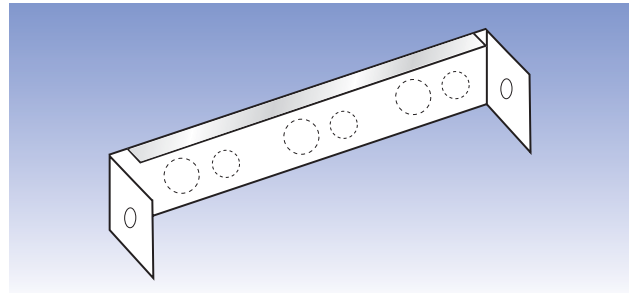


## Accessories



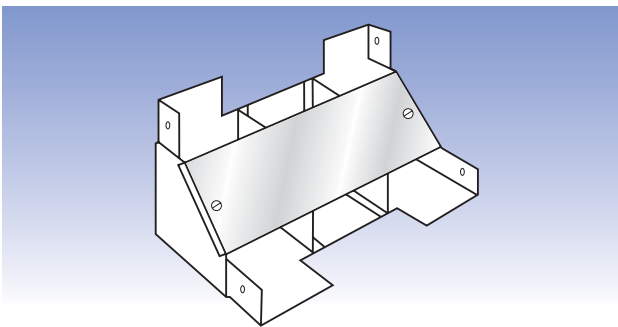
**Junction Box**

RFJB/(Size)/2	2 Compartments
RFJB/(Size)/3	3 Compartments



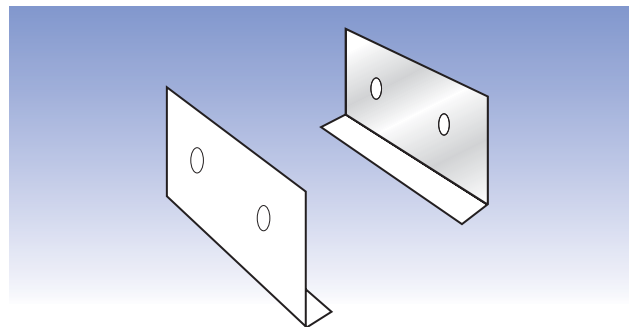
**End Cap**

RFEC/200	Suitable for 200mm wide trunking
RFEC/300	Suitable for 300mm wide trunking
RFEC/400	Suitable for 400mm wide trunking



**Riser Bend**

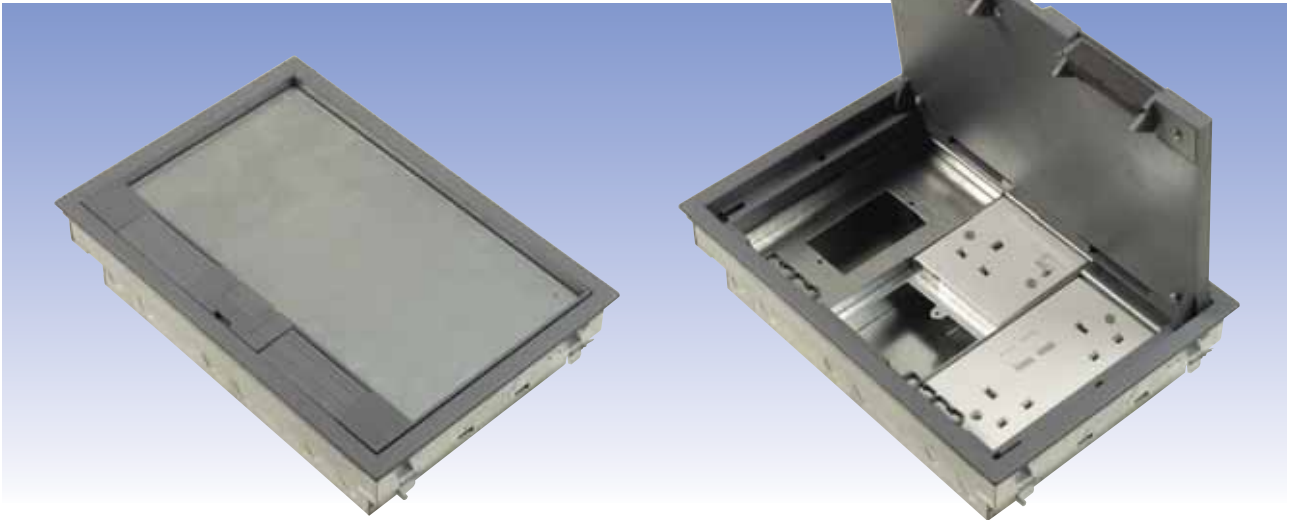
RIB2/(Size)/2	2 Compartments
RIB2/(Size)/3	3 Compartments



**Standard Coupler**

RFSC/40
---------

# TRUNKING



## Service Outlet Box

UL-RFSB For 2 Compartments

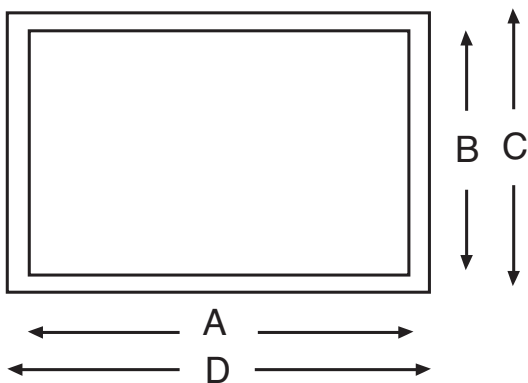
UL-RFSB For 3 Compartments

### Standard Finish : Epoxy Powder Coated

Service Outlet Boxes are designed to be suspended from Raisedfloor panels. The aperture required and external dimensions of flange are:

Product Code	A	B	C	D
RFSB/2	285	195	225	330
RFSB/3	285	195	225	330

Overall Depth 85mm



Other sizes are available upon request.

## Service Boxes

The U-LI raised service box is designed specially to meet the requirements of a raised access flooring environment. The service box consists of three main components:

- **Box Base Frame**
- **Trap and Frame**
- **Outlet Panel**

The box base frame is manufactured from hot dipped galvanised steel sheets that conform to BS 2898. The three compartment box which carries the outlet panel has provision for knockout holes to facilitate conduit entry to each compartment.

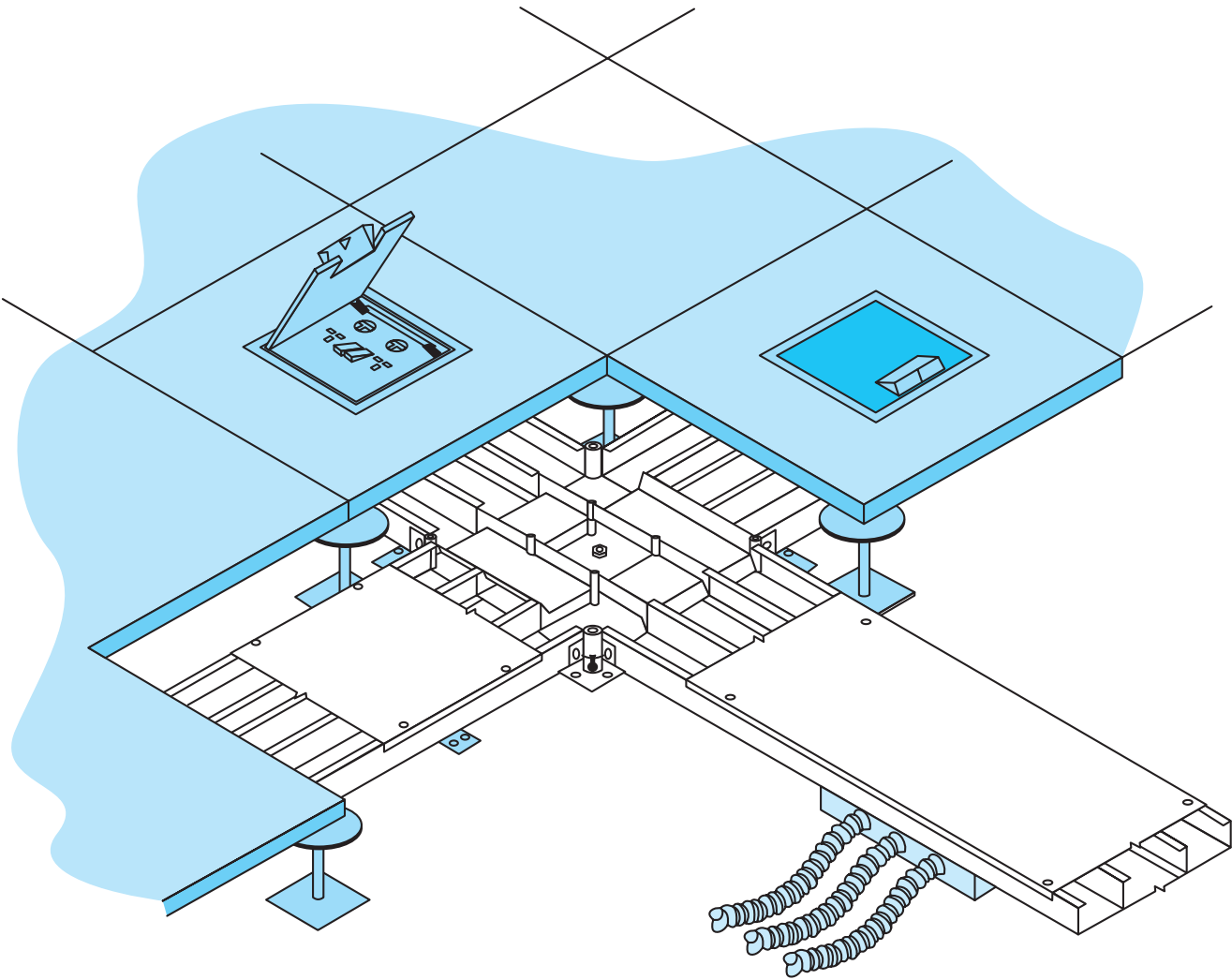
The carpet trim and trap are moulded from polycarbonate which gives it great mechanical strength and excellent impact resistance. The carpet trim and trap are bolted on a hot-dipped galvanised steel frame to increase support strength.

The powder coated outlet panel provides access to power, voice and data outlets. Non-standard service outlet panels are also available on request.



# RAISED FLOOR

## Raisedfloor Trunking System



# Flushfloor Trunking





## Flushfloor Trunking System

### General

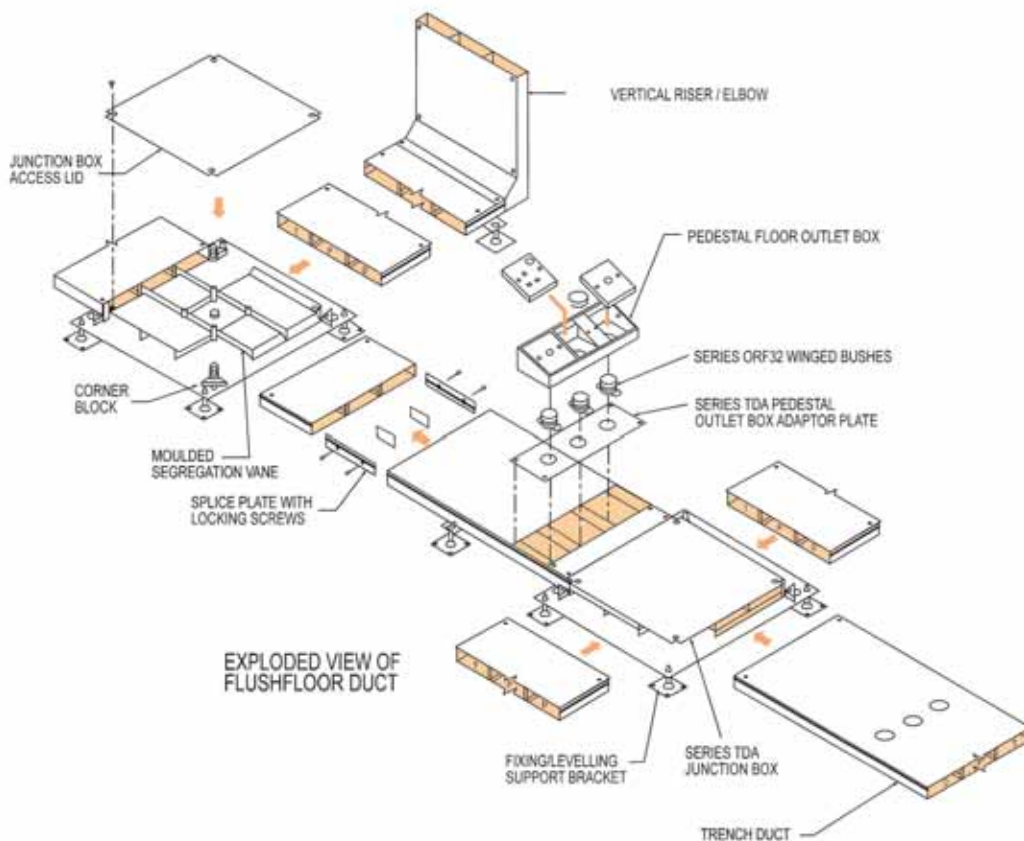
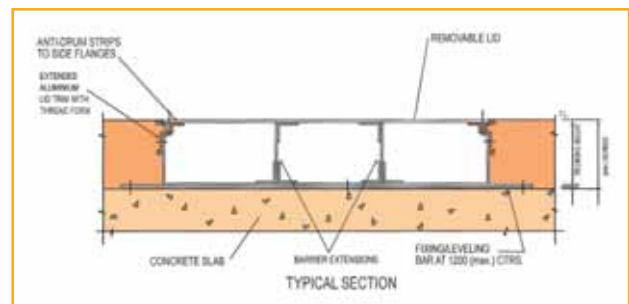
The United U-LI Flushfloor Trunking System is generally used for cable distribution via the flooring within an office space and should be installed complete with all necessary trunking ie; junction box cross or tee with flyover, junction box elbow, service outlet, reducers, vertical access riser and end cap.

The U-LI Flushfloor system comprises of single or multi-way ducts/trunking made of rigid, non corrodeable, galvanized steel sheets. Multiway characteristic that is suitable for use in the distribution of telephone (voice), computer signal (data) and power (electrical) service screeds and is finished in accordance with the layouts shown in the specification drawings.

All compartments are separated by a removable sectionalized separator between compartments for the entire length of the U-LI trunking system. The compartment dividers are easily removed and reinstalled without having to use special tools or modification of parts. For large span compartments, intermediate support is provided to prevent sagging.

U-LI Flushfloor trunking is designed with an extended Aluminium Lid Trimmer complete in thread form so as to allow the fastening of the cover along the entire length of the trunking. A modular design in equal sections to facilitate subsequent removal and interchanging of cover and service outlets.

Any screws, bolts and nuts used in any part of the flushfloor system, particularly at the joint of each trunking and earth links are smooth and should not cause any damage to wiring during installation.



# TRUNKING

## Flushfloor Trunking with Aluminum Trimming



### 32mm Height

Wide	Compartment	Product Codes
150	1	UL-FFT 150/1/A32
150	2	UL-FFT 150/2/A32
225	2	UL-FFT 225/2/A32
225	3	UL-FFT 225/3/A32
300	2	UL-FFT 300/2/A32
300	3	UL-FFT 300/3/A32

### 40mm Height

Wide	Compartment	Product Codes
150	1	UL-FFT 150/1/A40
150	2	UL-FFT 150/2/A40
300	2	UL-FFT 300/2/A40
300	3	UL-FFT 300/3/A40

### 50mm Height

Wide	Compartment	Product Codes
300	2	UL-FFT 300/2/A50
300	3	UL-FFT 300/3/A50
400	2	UL-FFT 400/2/A50
400	3	UL-FFT 400/3/A50

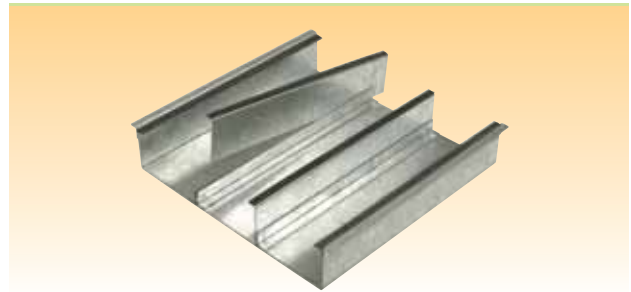
### 58mm Height with Removable Divider

Wide	Compartment	Product Codes
300	2	UL-FFT 300/2/A58
300	3	UL-FFT 300/3/A58
400	2	UL-FFT 400/2/A58
400	3	UL-FFT 400/3/A58
500	3	UL-FFT 500/3/A58
600	3	UL-FFT 600/3/A58

### 65mm Height with Removable Divider

Wide	Compartment	Product Codes
300	2	UL-FFT 300/2/A65
300	3	UL-FFT 300/3/A65
400	2	UL-FFT 400/2/A65
400	3	UL-FFT 400/3/A65
500	3	UL-FFT 500/3/A65
600	3	UL-FFT 600/3/A65

## Flushfloor Trunking normal type



### 32mm Height

Wide	Compartment	Product Codes
150	1	UL-FFT 150/1/N32
150	2	UL-FFT 150/2/N32
225	2	UL-FFT 225/2/N32
225	3	UL-FFT 225/3/N32
300	2	UL-FFT 300/2/N32
300	3	UL-FFT 300/3/N32

### 40mm Height

Wide	Compartment	Product Codes
150	1	UL-FFT 150/1/N40
150	2	UL-FFT 150/2/N40
300	2	UL-FFT 300/2/N40
300	3	UL-FFT 300/3/N40

### 50mm Height

Wide	Compartment	Product Codes
300	2	UL-FFT 300/2/N50
300	3	UL-FFT 300/3/N50
400	2	UL-FFT 400/2/N50
400	3	UL-FFT 400/3/N50

### 58mm Height with Removable Divider

Wide	Compartment	Product Codes
300	2	UL-FFT 300/2/N58
300	3	UL-FFT 300/3/N58
400	2	UL-FFT 400/2/N58
400	3	UL-FFT 400/3/N58
500	3	UL-FFT 500/3/N58
600	3	UL-FFT 600/3/N58

### 65mm Height with Removable Divider

Wide	Compartment	Product Codes
300	2	UL-FFT 300/2/N65
300	3	UL-FFT 300/3/N65
400	2	UL-FFT 400/2/N65
400	3	UL-FFT 400/3/N65
500	3	UL-FFT 500/3/N65
600	3	UL-FFT 600/3/N65

**Standard length:** 2440mm

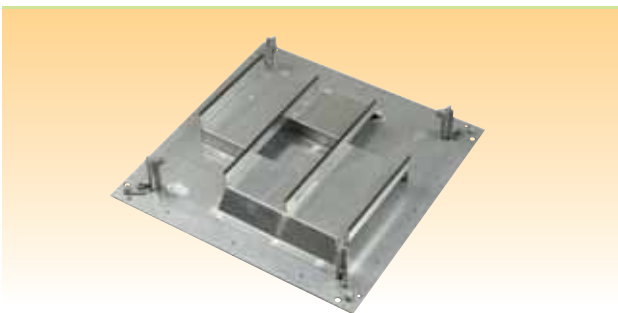
**Standard designated length:** 406mm, 815mm, 1220mm, 1628mm, 2034mm

## Junction Box

U-LI Junction boxes come in options such as Cross, Tee or Elbow and are used after being covered with junction box end caps. The appropriate sized floor junction box can be provided and installed according to requirement.

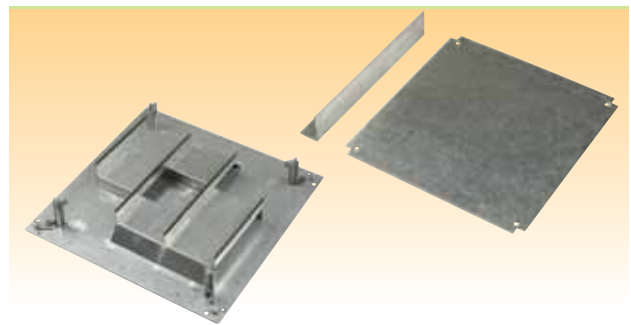
The compartments of each indicated box routings have a 100% cable handling capacity throughout the main trunking without being obstructed by the flyover.

- Cross, tee and elbow junction boxes are supplied with flyovers.
- Body of boxes and elbows are formed from 1.6mm galvanised steel sheets.
- All covers are formed from galvanised steel sheets.
- Cross, tee and elbow boxes are designed on a modular concept to suit flushfloor trunking.



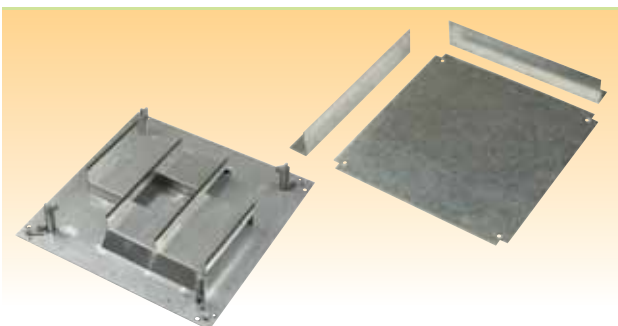
### Flushfloor Junction Box Cross

Product Code	Description
UL-FFT 300/2/(H)X	300 W x (H) 2 Compartments
UL-FFT 300/3/(H)X	300 W x (H) 3 Compartments
UL-FFT 400/3/(H)X	400 W x (H) 3 Compartments
UL-FFT 500/3/(H)X	500 W x (H) 3 Compartments
UL-FFT 600/3/(H)X	600 W x (H) 3 Compartments



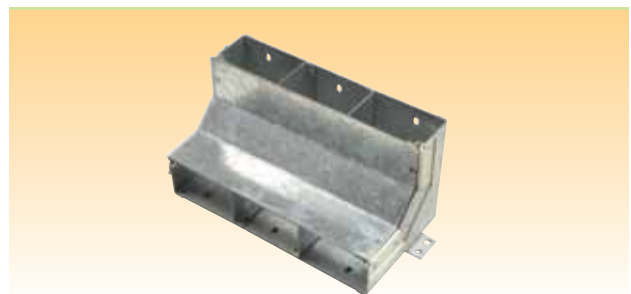
### Flushfloor Junction Box Tee

Product Code	Description
UL-FFT 300/2/(H)T	300 W x (H) 2 Compartments
UL-FFT 300/3/(H)T	300 W x (H) 3 Compartments
UL-FFT 400/3/(H)T	400 W x (H) 3 Compartments
UL-FFT 500/3/(H)T	500 W x (H) 3 Compartments
UL-FFT 600/3/(H)T	600 W x (H) 3 Compartments



### Flushfloor Elbow Box

Product Code	Description
UL-FFT 300/2/(H)L	300 W x (H) 2 Compartments
UL-FFT 300/3/(H)L	300 W x (H) 3 Compartments
UL-FFT 400/3/(H)L	400 W x (H) 3 Compartments
UL-FFT 500/3/(H)L	500 W x (H) 3 Compartments
UL-FFT 600/3/(H)L	600 W x (H) 3 Compartments



### Flushfloor Vertical Access Box

Product Code	Description
UL-FFT 300/2/(H)V	300 W x (H) 2 Compartments
UL-FFT 300/3/(H)V	300 W x (H) 3 Compartments
UL-FFT 400/3/(H)V	400 W x (H) 3 Compartments
UL-FFT 500/3/(H)V	500 W x (H) 3 Compartments
UL-FFT 600/3/(H)V	600 W x (H) 3 Compartments

# TRUNKING

## Accessories



### Reducer

Product Code	Description
UL-FFT 300-225 R	Reducer 400 to 300mm 60mm 3 Compartments
UL-FFT 225-150 R	Reducer 300 to 155mm 60mm 3 Compartments
UL-FFT 200-150 R	Reducer 400 to 300mm 60mm 2 Compartments
UL-FFT 200-100 R	Reducer 400 to 300mm 60mm 2 Compartments
UL-FFT 150-100 R	Reducer 400 to 300mm 60mm 1 Compartments

\*also available in 32mm and 40mm

\*also available in 155, 300 and 400 width.



### End Cap

Product Code	Description
UL-FFT 100 R	End Cap for 100 x 28mm trunking
UL-FFT 150 R	End Cap for 150 x 28mm trunking
UL-FFT 200 R	End Cap for 200 x 28mm trunking
UL-FFT 225 R	End Cap for 225 x 28mm trunking
UL-FFT 300 R	End Cap for 300 x 28mm trunking

\*also available in 32mm and 40mm

\*also available in 155, 300 and 400 width.



### Trunking Support Bracket

(Adjustable Type)

Product Code	Description
UL-FFT 205	For 155 trunking
UL-FFT 330	For 300 trunking
UL-FFT 455	For 400 trunking



### Trunking Support Bracket

(Fixed Height)

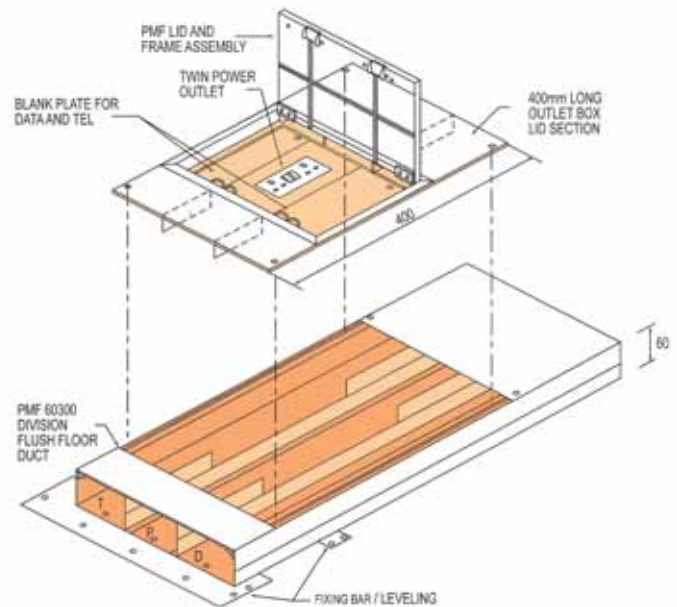
Product Code	Description
SBF 205	For 155 trunking
SBF 330	For 300 trunking
SBF 455	For 400 trunking

## Service Outlet Boxes

The United U-LI Flushfloor service outlet trap & frames are constructed from high tensile strength, pressure injected zinc alloy, die cast material. It is protected by an electrostatic coated, high temperature oven baked epoxy powder coating so as to protect all visible parts from stain and rust.

The trap cover is raised with a 6mm – 10mm edge to provide a neatly trimmed area into which carpet or vinyl materials can be fitted.

The 406mm length of the flushfloor service outlet is a concealed type and each module is similar in size with modular trunking covers for interchangeability.

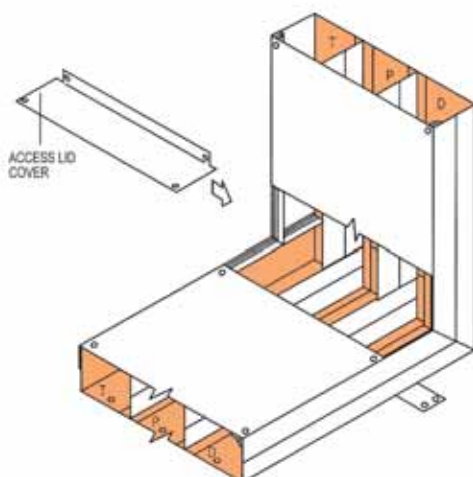


## Material

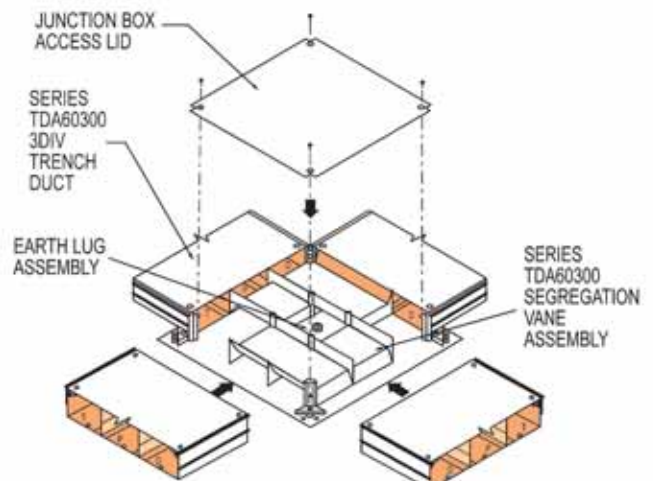
The trunking, junction boxes, modular service boxes, vertical access boxes and etc. are constructed from Pre-Galvanized steel sheets that conform to BS 2989. The thickness of the trunking body is 1.6mm with an aluminium trimming. The thickness for all compartment separators are not less than 1.0mm. The junction box base is not less than 2.0mm and all covers are not less than 2.5mm.



### Vertical Access



### Junction Box





**United U-LI Corporation Berhad**

(Company No: 51013711)

(Incorporated in Malaysia Under the Companies Act, 1965)

No. 33, Jalan Kartunis U1/47, Temasya Industrial Park, Seksyen U1, 40150 Shah Alam, Selangor Darul Ehsan, Malaysia

Tel: +(603) 5569 5999 (Hunting Line) Fax: +(603) 5569 1666

email: [hq@uli.com.my](mailto:hq@uli.com.my)

website: [www.uli.com.my](http://www.uli.com.my)